











## *Your Greater Yellowstone Adventure Awaits!*

An authentic Montana experience conjures up a vivid array of images. You picture scenic beauty - from inspiring peaks to rolling rivers to expansive landscapes unique to the Northwest. Roaming around this part of the country can't help but impress. In Montana's Paradise Valley, while the surroundings are peaceful, the ability to explore the outdoors awakens a strong sense of adventure.

Sage Lodge, located on the banks of the Yellowstone River just 35 minutes from Yellowstone National Park, offers the ultimate Montana luxury resort getaway. It's an idyllic headquarters from where you can launch a day of fly fishing, hiking, biking, hunting, cross-country skiing - or any other endeavor that calls your name. And, your outdoor expeditions will culminate in serious indoor comfort. Our Lodge guestrooms and Ranch Houses deliver pure Montana ambiance inspired by anglers, along with the coziness essential to any type of vacation. While at the Lodge, you can also retreat to our full-service spa and restaurants for a drink and a Montana-inspired meal.

So, feel welcome. Welcome to adventure, welcome to relax, and welcome to join us as a couple, as a family, or as a group of friends or co-workers. Spend a week, a weekend, or host an event here, as Sage Lodge accommodates those who relish wide open spaces, as well as those seeking an intimate rendezvous.



## AMENITIES

---

Sage Lodge delivers unbound access to the outdoor wonders of Montana, but we also cater to those who enjoy a true sense of elevated comfort. Our amenities are extensive, so whatever you feel like doing, it'll still feel like you're getting away. When you're not outside hiking, biking, or fishing, you can still treat your body well inside - whether in our restaurants, fitness center, luxurious spa, or outdoor hot tubs.

A stay at Sage Lodge includes robust seasonal programming, such as daily on-property activities like axe throwing, fly fishing fundamentals, yoga, live music, guided stargazing, and more. Our seasoned Concierge team helps you plan the ultimate Yellowstone Country adventure, making sure you take advantage of everything on the Sage Lodge property, as well as in the area.





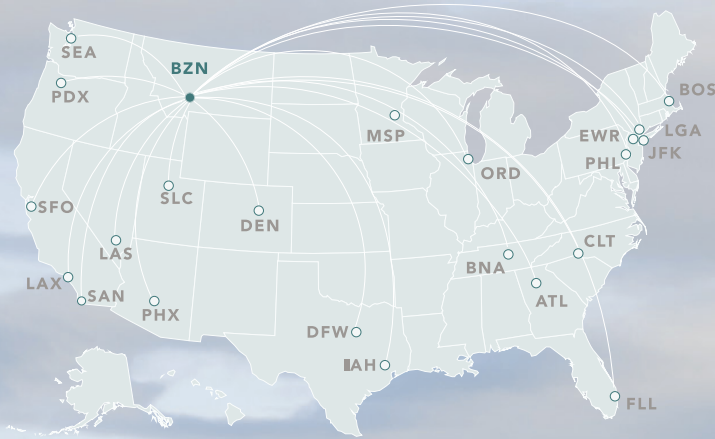


## GETTING HERE

Despite its rural location, getting to Sage Lodge is convenient and easy. **Bozeman Yellowstone International Airport (BZN)** is the recommended commercial airport for flying in. It is approximately a one-hour drive from Sage Lodge. There are numerous non-stop flights to Bozeman from around the country, including:

- |                     |                  |
|---------------------|------------------|
| » Atlanta           | » New York       |
| » Boston            | » Minneapolis    |
| » Chicago           | » Nashville      |
| » Dallas/Fort Worth | » New York       |
| » Denver            | » Phoenix/Mesa   |
| » Detroit           | » Portland       |
| » Houston           | » Salt Lake City |
| » Las Vegas         | » San Diego      |
| » Long Beach        | » San Francisco  |
| » Los Angeles       | » Seattle        |

*\*Flight data as of March 2021*



## TRANSPORTATION

---

Your Sage Lodge adventure begins the moment you hit the open road and drive through beautiful Paradise Valley. Whether you opt for an airport shuttle with one of our preferred providers or rent your own vehicle through our partner **GoRentals**, the drive to Sage Lodge is a sight to be seen in any season. **GoRentals** offers luxury car, SUV, van and sport car rentals for every level of adventurer, perfect for Montana's rugged terrain. Ask us about preferred rates and discounts available exclusively for Sage Lodge guests.





## IN THE AREA

---

### *Endless Exploration...*

#### YELLOWSTONE NATIONAL PARK

Just 35 miles South, Yellowstone's North Entrance in Gardiner, Montana is open year-round for road travel. Explore endless adventure in the world's first National Park!

#### LIVINGSTON, MONTANA

Livingston is a historic railroad town with history around every corner. Visit the train museum, grab a bite to eat at one of the amazing restaurants or bars, or put on your boots and head to a local rodeo!

#### HOT SPRINGS

Relax and soak in one of the local hot springs, mineral-rich pools famous for their healing properties.

#### BEARTOOTH HIGHWAY

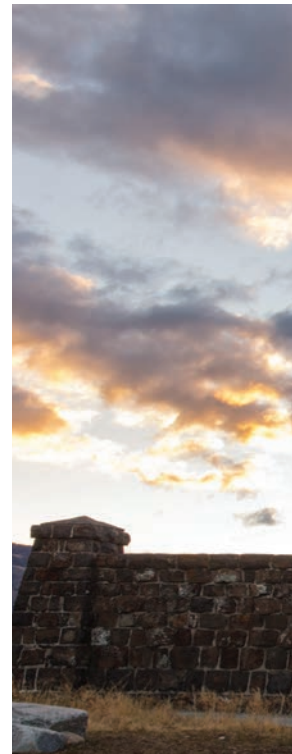
Heralded as one of the most scenic drives in the United States, the Beartooth Highway features breathtaking views of the Absaroka and Beartooth Mountains, and open high alpine plateaus dotted with countless glacial lakes, forested valleys, waterfalls and wildlife.

#### HIKING & FISHING IN THE VALLEY

Paradise Valley is an iconic place to lace up the hiking boots or string up your rod to experience the mountains and rivers of Montana.

#### MUSEUMS & HISTORY

Visit the Yellowstone Gateway Museum, the Livingston Depot, the International Federation of Fly Fishers Museum & Library, or the Museum of the Rockies in Bozeman!











## ACCOMMODATIONS

---

### LODGE GUESTROOMS

Although a Montana trip is typically focused on outdoor adventures, Sage Lodge is committed to the indoor experience, as well. Gaze out the windows for hours, settle into your reading nook, or lounge on the balcony and lose yourself in the scenery. And whether you want to sleep a little or a lot, you will always sleep well in our accommodations.

#### Room Types Include:

- Lodge King
- Lodge Deluxe King
- Lodge Double Queen
- Lodge Paradise King

*All King rooms include a separate sitting area with a queen pullout sleeper sofa to accommodate additional guests.*

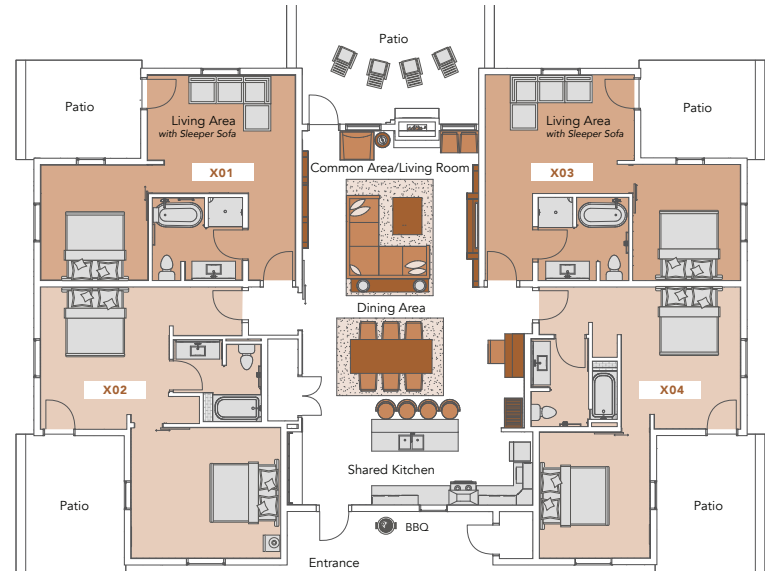




## RANCH HOUSES

If you're planning a group trip to Montana or Yellowstone National Park, our Ranch Houses are tailor made for your stay. With 2,783 square feet, each full Ranch House offers everything you need for a group getaway or retreat, including four separate guestrooms totaling six king beds and two queen pullout sofas, with a private bathroom in each guestroom. All rooms connect to a spectacular space that offers a full kitchen, dining area, living room, double-sided gas fireplace, and private patio with outdoor fireplace. Ranch Houses are ideal for families, a group of friends, or even co-workers and can accommodate up to 16 guests.

Our Ranch Houses are located at the south end of the property offering direct access to the casting pond and scenic views of the majestic Emigrant Peak and Paradise Valley.







## DINING

### *Montana-Inspired Dining with Epic Views*

Eating well is part of the Sage Lodge experience, and we offer rustic, bold, and honest flavors in our two restaurants.

#### THE GRILL

Nothing is more quintessentially *Montana* than ending your day with a hearty steak paired with a glass of whiskey, wine, or local draught beer. The Grill at Sage Lodge takes this concept to the next level. With a menu full of various cuts of steak from signature lines of beef and game, The Grill delivers on a contemporary steakhouse experience, with memorable twists and turns along the way. A variety of inspired dishes complete the menu, fueled by locally-sourced produce and proteins sure to fill your body and soul with true Montana hospitality. Awe-inspiring views of the Yellowstone River and Paradise Valley can be seen in every direction, making The Grill an iconic destination to watch the sun set on a well-spent Montana day.



#### FIRESIDE ROOM

From sunrise to sunset, guests of Sage Lodge visit the Fireside Room to relax and enjoy food and drinks in a truly spectacular setting. A very comfortable combination of indoor and outdoor gathering spaces are situated against the stunning backdrop of Emigrant Peak and complemented by the comforting crackle of a wood-burning fire, a casual Montana restaurant experience.





## THE SPA

---

### *The Softer Side of the Wild West*

Yes, Montana is known for its rugged environment, its “get out there, get dirty, and have fun” spirit. Those are apt descriptions, and at Sage Lodge you can go full-on Montana. Yet we’re proud to offer the flip side, where you can relax your mind and rejuvenate your soul in the serene setting of our Montana spa. The Spa at Sage Lodge is open to our guests and local visitors, and is perfect for pre-wedding pampering, special occasion celebrating, or well-deserved restorative time.

While you’re here, enjoy all of the healing elements that our spa has to offer before or after your treatment - from our steam room and sauna, to a soak in our hot tub or some quiet time in our relaxation lounge. We look forward to spoiling you in the gorgeous, natural setting of The Spa, where relaxation is more than just a state of mind.





## ACTIVITIES

---

### *Peak Adventure, Inside and Out*

Nestled in the heart of Paradise Valley, Sage Lodge is the perfect launchpad for your Montana adventure. We can safely say that during your time with us, you'll never be at a loss for something to do. If outdoor expeditions are what you live for, this is where you belong.

#### WARM SEASON:

- Fly Fishing
- Hiking
- Mountain Biking
- Llama Treks
- Axe Throwing
- Yellowstone Park Tours
- Yoga
- Stand Up Paddle Boards
- Wood Burning Classes
- Fly Tying Lessons & Casting Lessons
- Yellowstone River Private Luxury Tours
- Whitewater Rafting
- Scenic Floats
- Kayaking
- Horseback Riding
- Plein Air Painting
- Helicopter Tours
- Stargazing

#### SNOW SEASON:

- Snowshoeing
- Cross Country Skiing
- Yellowstone Park Tours
- Axe Throwing
- Guided Stargazing
- Sledding
- Yoga
- Wood Burning Classes
- Plein Air Painting
- Fly Tying Lessons

### YELLOWSTONE NATIONAL PARK

Located just 35 minutes from the North Entrance, Sage Lodge is the perfect basecamp for your Yellowstone adventures. The North Entrance in Gardiner, Montana is the only park entrance open year-round to automobile travel. Whether you hire a guided tour, or just go for a drive, we can guarantee that the adventures are endless and the memories you will make will last a lifetime.











## MEETINGS & EVENTS

---

### *Memorable Events in the Ultimate Destination*

When you think of meetings and events, rarely does the word “barn” come to mind - unless you’ve been to a get-together at Sage Lodge. Our versatile event facility, affectionately called The Barn, is capable of hosting rustic and elegant weddings, corporate retreats, business meetings, or any other gathering you can think of. The Barn offers a breathtaking setting and grants the must-have conveniences for successful events.

Event spaces at Sage Lodge don’t just provide a location to gather, they make a statement. From small retreats to grand celebrations, our event spaces are adaptable to the setting you envision. Our spaces allow for large presentations to smaller breakouts, and our seamless indoor-to-outdoor design allows events to naturally, and delightfully, spill to the great outdoors above the Yellowstone River.

When your meetings are done, Sage Lodge offers an unparalleled array of adventure. We can help you create custom multi-day itineraries or organize team activities because in Montana, we work hard and play hard.



Photos by Orange Photographie

## WEDDINGS

---

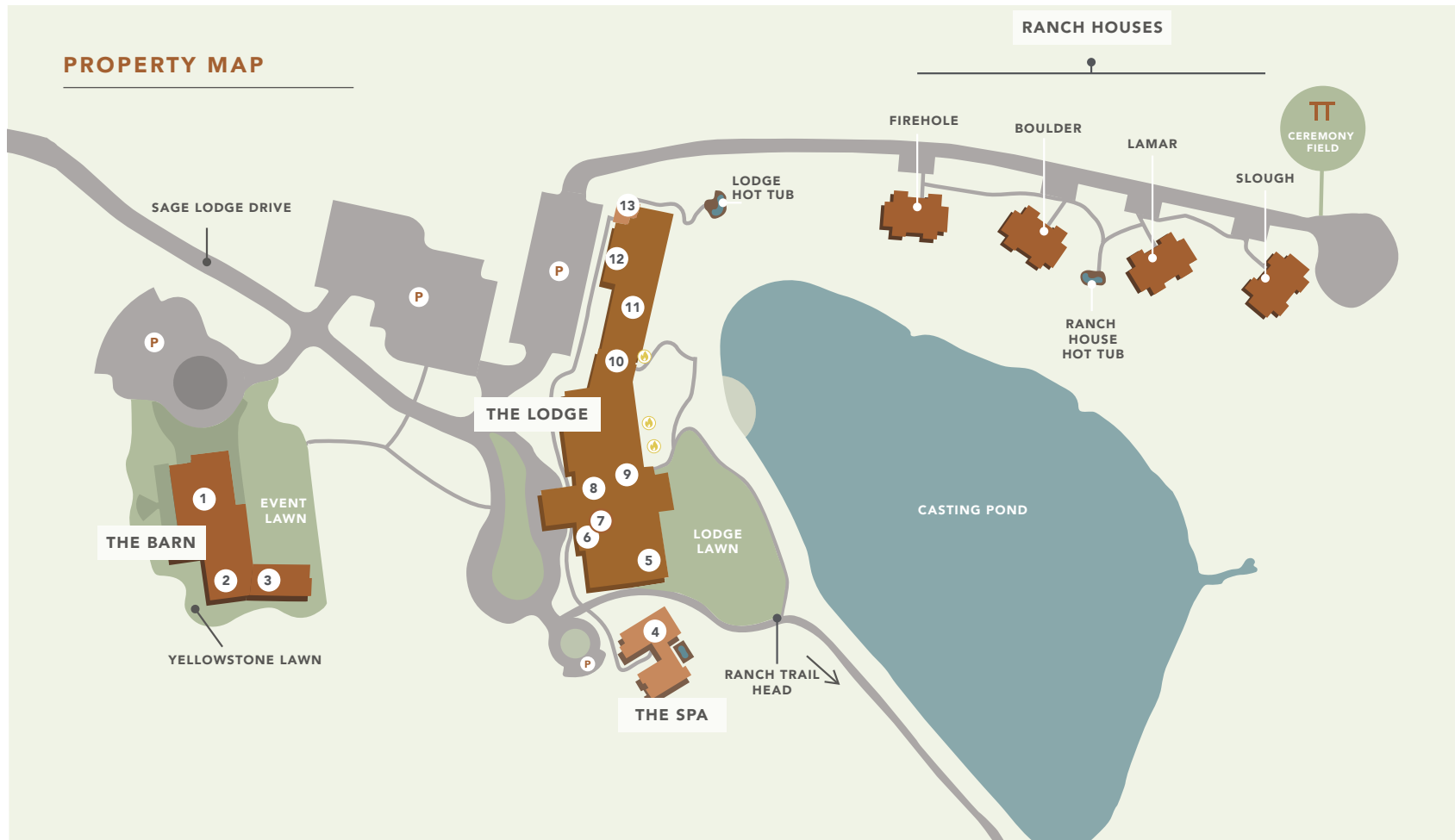
### *Marry in Montana Paradise*

There's a reason this area is called Paradise Valley. Its breathtaking natural beauty creates a romantic and serene backdrop for an unforgettable wedding. Whether your vision is charming and rustic, formal and elegant, or somewhere in between, our talented team at Sage Lodge will work with you to make your destination wedding vision a reality.

Our attentive staff can expertly handle intimate rehearsal dinners and wedding receptions for up to 120 guests (or more if you select a full buyout experience!) We'll help you paint the picture of your wedding day, and prepare a custom event, including the catering, décor and overall ambiance to make your day as special as the two of you are to each other.



## PROPERTY MAP



1. THE GRILL
2. YELLOWSTONE ROOM
3. MEETING ROOMS
4. THE SPA STEAM ROOM, SAUNA, HOT TUB

5. FIRESIDE ROOM
6. GEAR ROOM
7. RETAIL / PROVISIONS
8. THE LOFT
9. THE LIBRARY

10. THE NOOK
11. LODGE GUESTROOMS
12. GUEST LAUNDRY
13. FITNESS CENTER

-  FIRE PITs
-  PARKING



## CONTACT

---

55 Sage Lodge Drive, Pray, MT 59065

Mailing Address: PO Box 206, Pray, MT 59065

Tel: 855.400.0505

[www.sagelodge.com](http://www.sagelodge.com)

*For general information:*

[info@sagelodge.com](mailto:info@sagelodge.com)

*For group or special event information:*

[sales@sagelodge.com](mailto:sales@sagelodge.com)

Follow us!

 [@sagelodge](https://www.instagram.com/sagelodge)

 [@sagelodgemt](https://www.facebook.com/sagelodgemt)





SAGELODGE.COM | 855.400.0505 | INFO@SAGELODGE.COM | 55 SAGE LODGE DRIVE, PRAY, MT 59065

